

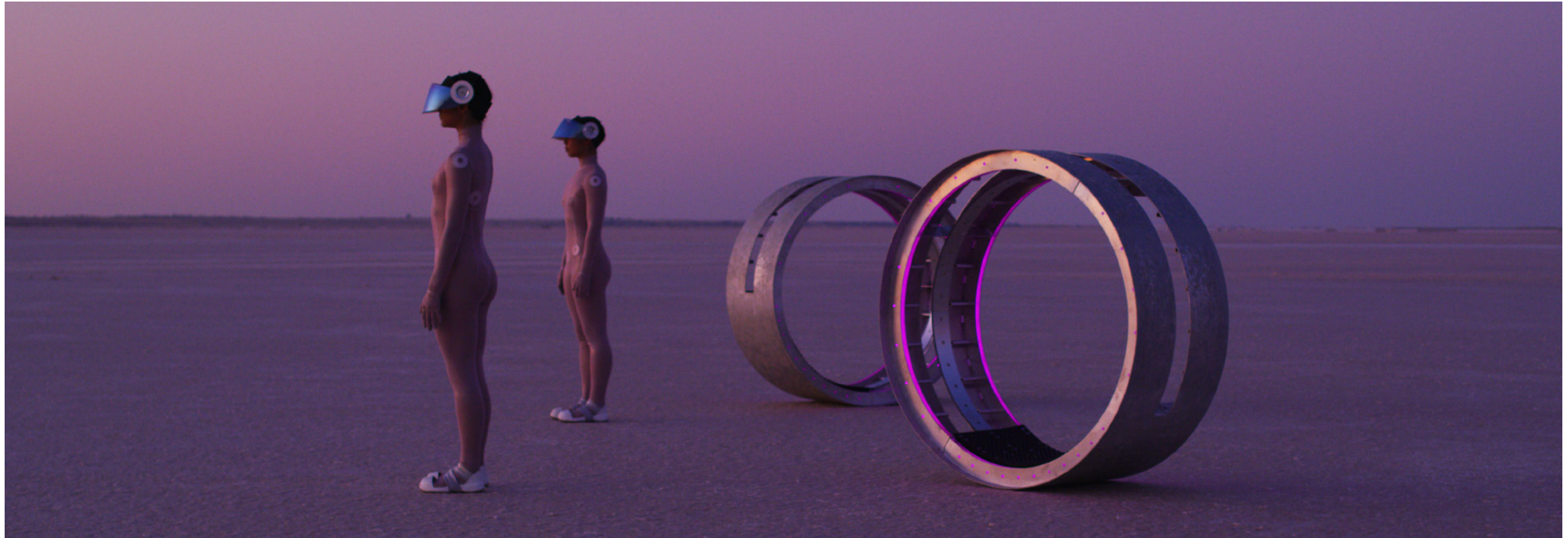
STUDIO BIRD

Matthew Bird

Architect & Artist, Melbourne Australia

Project Highlights

2008-21



Parallaxis
Moving Image
Samstag Museum of Art (Adelaide SA), 2020



An Immersive Encounter with the Afterlife

Installation/ performance

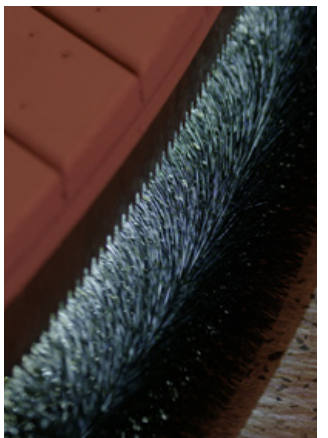
MPavilion, commissioned by the Naomi Milgrom Foundation (Melbourne CBD), 2017

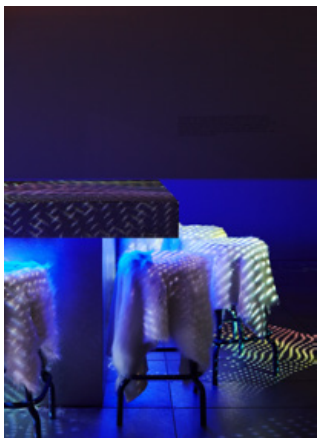
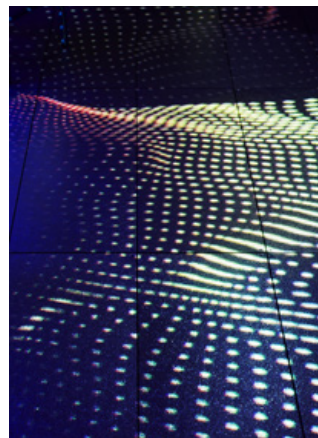


WOWZZZEEE

Installation/ set design/ performance (w/ fashion artist Adele Varcoe)

Presented at Arts House for the Festival of Live Art & the Melbourne Fashion Festival (VAMFF), 2018

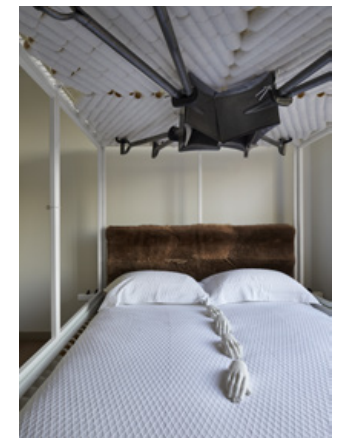
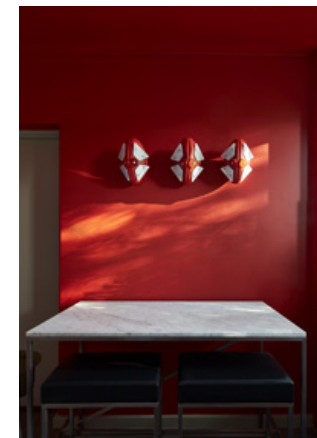
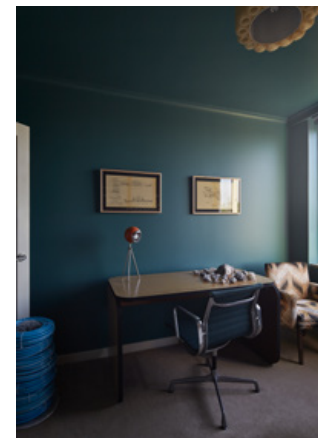
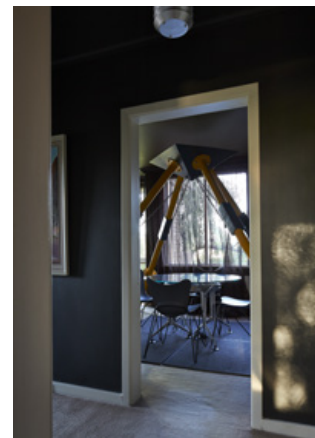




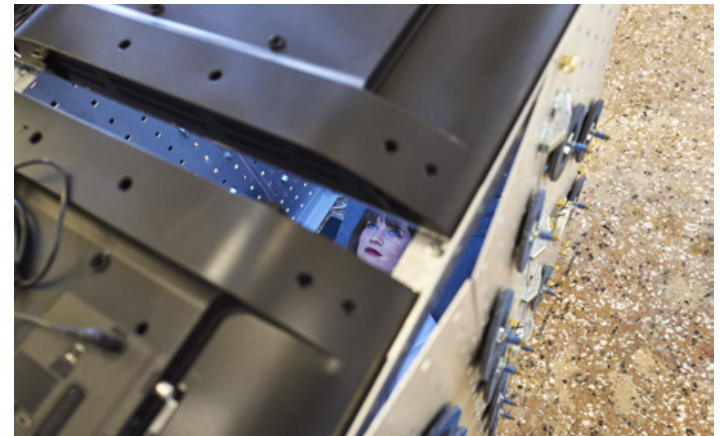
Crome Bar

Interior/ installation/ sculpture

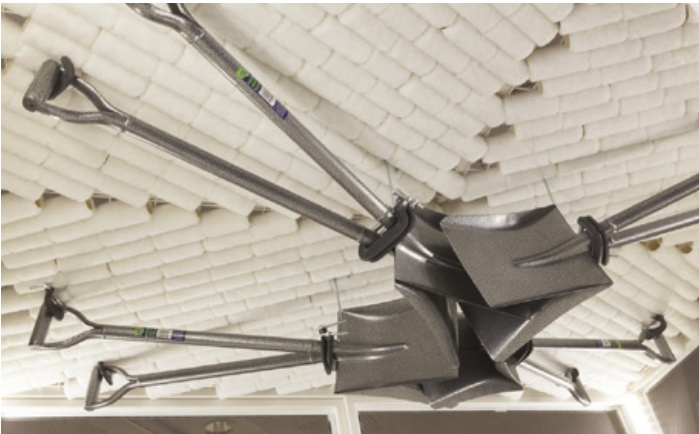
RMIT Design Hub, commissioned by RMIT University (Melbourne CBD), 2017



Theodore Treehouse
Interior decor/ installation/ sculpture
Private commission (Toorak, Melbourne), 2016



Sarcophagus
Installation
Venice Architecture Biennale, Palazzo Mora (Venice, Italy), 2016





Brasilia

Performance/ photography (w/ choreographer Phillip Adams)

Photographic essay supported by DFAT & the Australian Embassy Brazil, (Brasilia, Brazil), 2015-16



The Thorax Snug

Installation/ sculpture

Commissioned by the Geelong Library & Heritage Centre (Geelong), 2015



Hydronaut

Architecture/ sculpture (w/ industrial designer Mark Richardson)
Commissioned by Monash University (Caulfield Melbourne), 2015



Art Tram (Freeway & Rooftop Landing)
Photographic installation (w/ choreographer Phillip Adams)
Commissioned by the Melbourne Festival, 2015





Future Wagon

Installation/ sculpture/ photography (w/ choreographer Phillip Adams)

Melbourne Now, National Gallery of Victoria (Ian Potter) (Melbourne), 2013-14



And All Things Return To Nature Tomorrow

Set design/ installation/ sculpture (w/ choreographers Phillip Adams & Brooke Stamp)

Dance Massive Festival, Southbank Theatre, Melbourne Theatre Company (The Lawler), 2013



Aviary Paradis

Set design/ installation

Melbourne Festival 2011, MONA FOMA Festival 2012 & Teo Otto Theater, Remscheid Germany 2014





Alphaomega Apartment
 Interior decor/ installation
 Private commission (Melbourne CBD), 2008